

# UWELL

Manufactured by SHENZHEN UWELL TECHNOLOGY CO., LTD.

©2021 By SHENZHEN UWELL TECHNOLOGY CO., LTD., All Rights Reserved.  
Designed by UWELL Made in china



Uwelltech



Uwelltech



Uwelltech



Uwelltech



Uwell



UWELLCROWN V

UWELLCROWN V KIT  
User Manual

## **Specification**

### **UWELLCROWN V Mod**

Material: Zinc Alloy, PC+ABS, Aluminum alloy

Size: 86.2 mm × 53 mm × 26.2 mm

Net weight: 122 g

Power Range: 5-200 W

Standby Current: < 100 uA

Voltage Range: 0.7-8.0 V

Resistance Range: 0.1-3 Ω (VW) 0.1-1Ω (TC)

Temperature Range: 200-600 °F / 100-315 °C

### **UWELLCROWN V Tank**

Material: Stainless steel, Pyrex

Size: φ 29 mm × H 50.5 mm

Net Weight: 61g

Tank Capacity: 5 ml

Thread: 510

Coil Specifications:

FeCrAl UN2 Meshed-H 0.23 Ω coil: 65-70 W

FeCrAl UN2-2 Meshed-H 0.3 Ω coil: 50-55 W

FeCrAl UN2-3 Meshed-H 0.2 Ω coil: 65-70 W

## **The packaging includes**

1 × UWELLCROWN V Mod

1 × UWELLCROWN V Tank

1 × Extra glass

1 × 0.23Ω UN2 coil (pre-installed)

1 × 0.3Ω UN2-2 coil

1 × Pack of replacement O-rings

1 × User's manual

1 × Drip tip cover

1 × TYPE-C charging cable

## **Features**

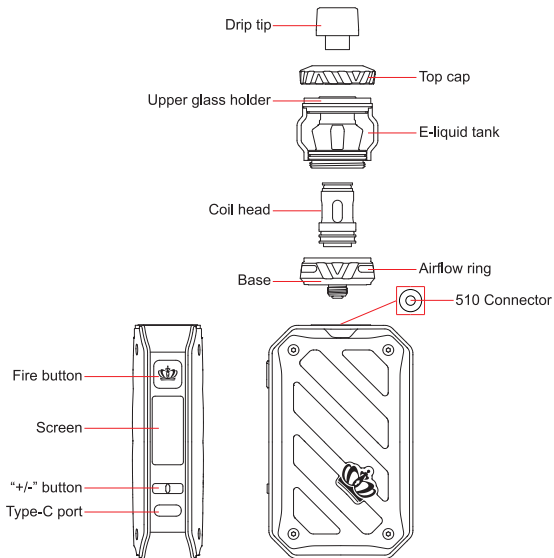
### **Mod**

1. Reliable performance and 0.008s fast firing from UWELL's new PCBA.
2. TCR mode can flexibly match coils of different TC materials.
3. 0.96-inch TFT color screen with a brand new user interface, it can display more comprehensive data and provide a more convenient operation experience.
4. The PCBA is dustproof, moisture-proof, and e-juice-proof, which protects the core unit and prolongs the life of the mod.
5. The anti-leaking design on the 510 connector prevents the juice from leaking into the mod.
6. Hollow design with brilliant colors on the front and back of the mod.

### **Tank**

1. UWELL presents the self-cleaning technology to lessen e-juice leaking.
2. The quarter-turn top cap design makes adding juice even easier.
3. The filler hole has a silicone check valve to aid in filling.
4. The Pro-FOCS flavor testing technology from UWELL gives you an excellent vape experience.
5. Plug-pull coil, easy to replace.
6. Top filling.

## Product Illustration



## Battery installation

Disassemble the battery cover, place batteries into the device according to the +/- signs, and then assemble the battery cover on the mod.

(Attention: 1. Do not reverse the battery, batteries shall be purchased separately)

## Charging

Type-C Charging: Plug the Type-C cable connected to the 5V adapter into the Type-C port to charge.

(The screen will display a dynamic charging or fully charged icon during charging, and the screen will be off if the battery is not installed or reversed.)

## Mod instructions

### 1. Power on/off

Click the fire button 5 times within 2 seconds to turn on/off the mod.



### 2. Select the mode

When the device is on, press the fire button 3 times within 2 seconds to enter the mode options. Press the "+" button or "-" button to select work mode from "POW" and "TCR", then press the fire button to confirm. The device exits the setting when no operation in 8 seconds.

### 3. "POW" mode – Power mode

After entering the power mode, press the "+/-" to adjust the wattage or hold the button to scroll through them faster. The wattage range is 5 – 200W.

Attention: The output voltage will decrease gradually during vaping. When the output wattage can not reach the set wattage, the device will lower the wattage automatically, and then the screen will display the output voltage after automatically adjusting the wattage.



### 4. TCR

a. After entering the TCR mode, the wattage will flash. The power adjustment range is from 10 to 120W. Press the "+/-" to adjust the wattage, then press the fire button to confirm and enter TCR adjustment. Press the "+/-" to adjust the TCR, then press the fire button to confirm.

b. TCR range: 0.00010 ~ 0.01000. Recommended TCR of common heating wire materials: SS316: 0.00088 ± 0.00020; Ni200: 0.00690 ± 0.00020.



### c. Wattage adjustment

In the TCR mode, press the "+" or "-" button to adjust the output temperature. When the temperature has reached the end of Fahrenheit, it will automatically switch to the Celsius temperature; when the temperature has reached the end of Celsius, it will automatically switch to Fahrenheit temperature.

## 5. Resistance detection

Resistance detection shall be done automatically. The operation mode would be saved as the previous setting.

a. If there is no atomizer or the resistance of the coil is too high, press the fire button the screen will indicate an open circuit.



b. If the resistance of the coil is too low, press the fire button the screen will indicate a short circuit.



## 6. Vaping

While the device is on, hold the fire button to vape; it will automatically stop firing when the button is held for longer than 10s.



## 7. How to lock your device

a. When the device is on, hold the fire button and the "-" button for 1 second to lock/unlock the device.



b. When the device is on, hold the fire button and "+" button for 1 second to lock/unlock the "+/-" buttons.



## 8. Low power indication

When the voltage of either battery is lower than 3.2V, press the fire button the screen will indicate a low battery.



### 9. Temperature protection

The output will be cut off if the PCBA temperature increase to 80°C during vaping, the screen will display "Too Hot! Please Wait"; When the temperature decreases to 65°C, you are free to vape again.



### 10. Reverse battery protection

The device is equipped with reversed battery protection. If the batteries are reversed, the device can not turn on.

### 11. Factory reset

Hold the fire button, "+" and "-" button for 1 second the screen will display "Factory Reset".



### 12. Clear puff counter

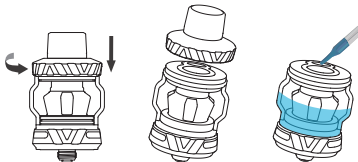
Hold the "+" and "-" button for 1 second to clear the puff counter.



### Tank Instruction

#### 1. How to Top Fill

- Turn the airflow ring to the closed position.
- Press and twist the top cap 90° anticlockwise to unscrew the top cap.
- Add e-liquid.
- Press and twist the top cap back on with a clockwise turn.



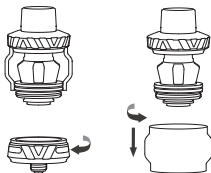
#### Caution:

- Don't put juice in the center hole.
- Do not leave the top cap off for a long time to avoid leaking.
- Install top cap back and tighten it after refilling to prevent leaking.
- When filling, only use a bottle that has a nozzle that can fit inside the opening of the tank, which is 3.5 millimeters wide.
- When using a new coil, please let it sit for 10 minutes after filling to avoid coil burning.

## 2. Glass Changing & Tank Cleaning

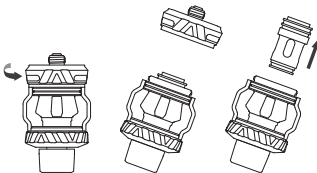
- Twist the base anticlockwise to unscrew the base.
- Hold the top cap with one hand, hold the glass with the other hand and twist off the glass with a clockwise turn.
- Re-install the glass and base after cleaning or changing.

(Caution: Make sure that the glass is flush with the mounting surface of the upper glass holder. The O-rings on the side is not protruding out of the metal groove to avoid leakage.)



## 3. How to change the coil

- Turn the tank upside-down. Hold the glass with one hand, hold the base with another hand, twist off the base in an anticlockwise motion.
- Pull out the coil.
- Make sure the O-rings are intact when installing a new coil head, and then plug in the new coil.
- Twist the base back on in a clockwise motion, open the airflow.





## **Attention**

1. Please choose certified high-quality batteries with the minimum output current of 30A. The batteries with the same brand and model would be recommended. Do not use a battery with a torn casing. Please note the recycling safely disposal of used batteries.
2. Please charge with certified high-quality adaptor and a USB cable with the charging current of 5V/2A.
3. Please do not vape or remove the battery during charging, the device and adaptor may warm up when charging, keep away from flammable and explosive goods.
4. Please use a dry and soft cloth to clean the device. Keep away from water or any liquids.
5. Please do not put the device in your pocket with other hard objects to avoid damages.
6. Please turn off the device when it is not in use, please remove the batteries when it is not in use for a long time.
7. If you want to use the recommended wattage then please fully open the airflow holes. If you want to use less airflow, we suggest you lower the wattage.
8. Don't disassemble the device.
9. The coil must be removed before you clean the atomizer. ONLY use clean water, NO chemical cleaning agents should be used. Reassemble once every part is dry.
10. If you plan on not using the atomizer for an extended period of time, clean the atomizer and then put it in a cool and dry area once it is dry.
11. This product does contain glass, be cautious when handling to avoid damages.
12. Avoid high temperature, low temperature and humidity during use or storage to avoid damage to the equipment.
13. The product parameters or pictures in this manual are for illustration purpose only, please refer to the actual product.

## **Safety Instruction**

Please read the following safety instructions carefully before using the product.

1. This product is only available to people who have reached the legal age of smoking. It is strictly forbidden for young children, pregnant women and women during breastfeeding or for patients with heart disease, high blood pressure, diabetes, depression and asthma.
2. Please put the product out of reach of children and pets to avoid injury.
3. When using this product, please keep away from inflammable and explosive materials to avoid injury.
4. The company does not assume any responsibility for any equipment damage or personal injury caused by user misuse.

### **Warranty Details**

Please keep the anti-counterfeit code and proof of purchase after purchasing the product. The warranty period is 180 days from the date of purchase. Our company provides warranty service (Device and atomizer only, exclude coil head and pod cartridge).

Please note that any of the following conditions are not covered by the warranty:

1. Exceeding the warranty period.
2. Damage caused by the use, maintenance, and storage that is not in accordance with the requirements as instructed.
3. Damage caused by unauthorized repair.
4. Damage caused by the usage of non-UWELL components.
5. Damage caused by force majeure.

### **Verification**

1. Visit the UWELL official website [www.myuwell.com](http://www.myuwell.com) through a smartphone or PC.
2. Please enter the 16 digits authentic code, and the result will be displayed in a few seconds.
3. Please feel free to contact UWELL via e-mail, phone or website for more help.

### **Customer Service**

We pride ourselves on manufacturing quality products and providing excellent customer service. For any issues, please contact us at [service@myuwell.com](mailto:service@myuwell.com).

\* UWELL reserves the right of final interpretation in the user manual.

\* It is hereby stated that the markable area on the product is not enough to mark the CE and WEEE as the standard dimensions.