

# CALIBURN

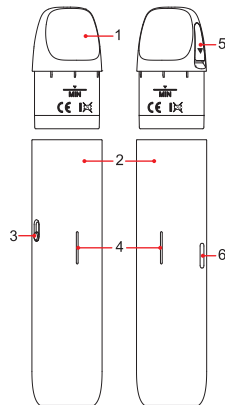
User Manual

UWELL

CALIBURN G4 MINI Pod System

©2025 By SHENZHEN  
UWELL TECHNOLOGY CO., LTD.  
All Rights Reserved.

## Illustration



1. Cartridge
2. Device
3. Airflow adjustment valve
4. LED light
5. Filler plug
6. TYPE-C charging port

## Quick Guide

1. Take the cartridge off the device, then remove the insulating film from the bottom.
2. Open the filler plug to fill the cartridge with e-liquid, insert the cartridge back into the device, then wait for 10 minutes after its first filling.

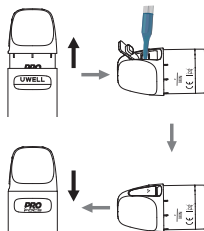
## Specifications

- Materials: PCTG, PC
- Dimensions: 24.1mm×14mm×112.7mm
- Net Weight: 46 g
- Side E-liquid Capacity: 3 ml
- Maximum Output Power: 35 W
- Cartridge Specifications: FeCrAl Meshed 0.6Ω Cartridge
- Battery Capacity: 1100 mAh

## Instructions

### 1. Cartridge Filling from the Side and Replacement

- a. Take the cartridge off the device for the first filling and remove the insulating film on the bottom of the cartridge before use.
- b. Open the filler plug for filling.
- c. Put the filler plug back after filling.
- d. Insert the cartridge into the device.
- e. For the cartridge replacement, please remove the used cartridge from the device and insert a new one.

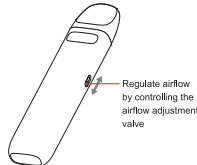


## Attention:

- a. Insert the nozzle of the e-liquid bottle into the filling port until to the bottom and then fill it with e-liquid.
- b. Please put the filler plug back as soon as the filling is done, and make sure it is properly sealed to prevent e-liquid leakage.
- c. Let the new cartridge sit for 10 minutes after the first filling to avoid coil burning.
- d. Please make a timely refilling when the e-liquid is under the MIN level.

## 2. Airflow adjustment

Adjust the airflow with the airflow adjustment valve.



## 3. Vaping

Take a draw to vape and during vaping, the corresponding battery level light gradually brightens, and performs a gradient color rotation when reaching its maximum brightness.

## 4. Battery level indication

During vaping, the LED light displays green when the battery level is above 60%, displays blue when the battery level is between 30% and 60%, and displays red when the battery level is below 30%.

## 5. Charging

When connecting the device to a power source through a TYPE-C charging cable, the indicator light is illuminated to indicate charging; the flashing red light, flashing blue light and flashing green light indicate low battery level, medium battery level, and sufficient battery level, respectively, and the green light stays on continuously after charging is completed.

## 6. Protection and Indication

- a. **Short-circuit protection:** When a short-circuit occurs, the red light flashes 3 times during vaping and the device stops outputting.
- b. **Low voltage protection:** When the battery power is insufficient during output, the red light flashes 10 times and the device stops outputting.
- c. **Overtime protection:** When the vaping exceeds 8 seconds, the green light flashes 5 times and the device stops outputting.
- d. **Open-circuit protection:** When an open-circuit occurs under a no cartridge or disconnection situation, there is no output during vaping and the blue light flashes 3 times.
- e. **Prompt for cartridge insertion and extraction:** When the cartridge is inserted, the LED light will light up directly and gradually turn off after 200ms; when the cartridge is pulled out, the blue light flashes twice.

## Warm Tips

1. Please charge with the certified high-quality power adaptor (5V/1A) and Type-C cable.
2. Please remove the cartridge from the device and store it separately when you travel by air, for the air pressure change may cause leakage.
3. Avoid high temperature, low temperature, flammables, explosives, water, and humid environment during the use or storage of the product. Please do not keep the product with hard objects to avoid damage. Please charge the device at least once a month to prolong its service life.

## WARNING

The new FDA regulations apply to the sales and distribution of all E-cig products.

1. Do not give away free samples.
2. It is prohibited to sell all types of E-cig products to people under the age of 21.
3. It is prohibited to sell all types of E-cig products in vending machines except those specified by laws and regulations.
4. It is prohibited to introduce products with "light", "low", "mild", or other similar descriptions in labels or advertisements into interstate trade.
5. It is strictly forbidden to be used by young children, pregnant women, and women during breastfeeding or patients with heart disease, hypertension, diabetes, depression, and asthma. Keep the product out of the reach of children, non-smokers, and animals.

## 6. Please do not drink it.

7. It may contain nicotine, which is known to be a highly addictive substance.
8. Swallowing or skin contact with this product may cause intoxication.
9. Please keep away from flammables and explosives when using or charging to avoid hazards.
10. Do not disassemble the product. The company won't be responsible for any product damage or personal injury caused by the improper operation.
11. Please consult your local vape shop or contact us through service@myuwell.com if you need help using the product.

## Product Verification

- Visit UWELL's official website [www.myuwell.com](http://www.myuwell.com) to verify under the SUPPORT navigation bar.
- Please scan the QR code on the package with your phone camera to verify. The result will be displayed on the page.
- Or you can enter the 16-bit anti-counterfeit code on the surface of the user manual into the input box, and the result will be displayed within seconds.

## Attention:

Please keep your package and the warranty card.

## Warranty Period

180 days from the purchasing date.

## Warranty Parts

Device and atomizer only. Coil and pod are excluded.

## Warranty Service Excluded Conditions

1. Expiration of warranty period.
2. Damage caused by failure to use, maintain and keep the product according to the requirements of the product instructions.
3. Damage caused by maintenance service personnel non-authorized by UWELL.
4. Damage caused by using inferior accessories of other brands.
5. Damage caused by the force majeure.

## Warranty Service Guide

1. You can ask the shop you purchased your vaping device for the warranty service.
2. You can visit [www.myuwell.com](http://www.myuwell.com) and ask for warranty service under the SUPPORT navigation bar.
3. You can contact us through service@myuwell.com if you have any questions.

Please use your phone camera to scan the QR code for further information.

